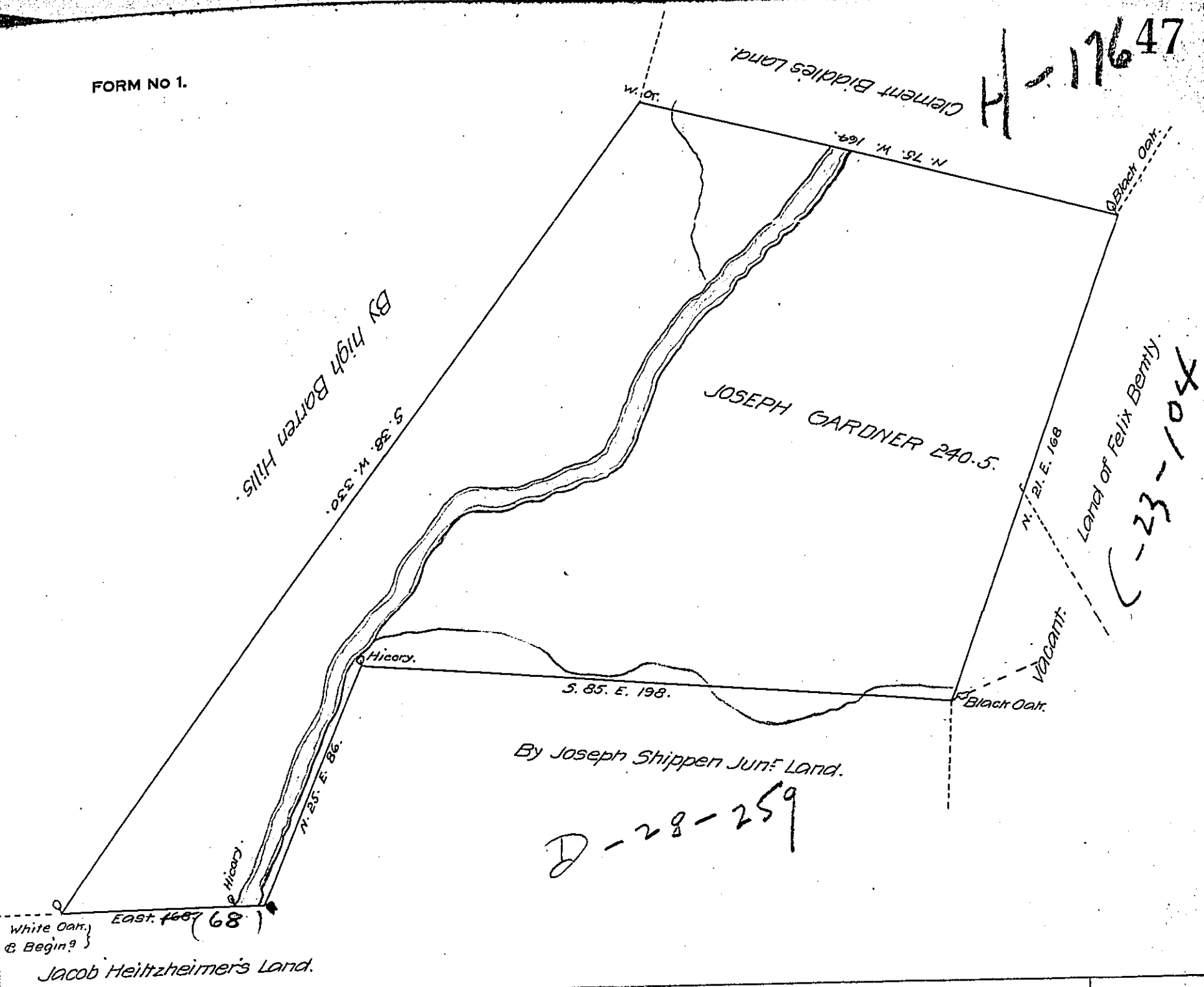


H-17647



The Draught of a Tract of Land called Millinford Situate on Standing Stone Creek near Brush Run in the County of Cumberland containing Two Hundred Forty Acres and an Half Acre with the usual Allowance of Six Acres P. Cent for Roads &c. Surveyd the 28th Day of June Anno Domini 1766 For Joseph Gardner In Pursuance of a Warrant from the honorable the Proprietaries Bearing Date at Philad^a the 3^d of June Anno Dom. 1763.

P. W^m Maclay Dep^y Surv^r

To John Lutrens Esq^r Surv^r Gen^l
of the Province of Pennsylvania
No Improvement on the above

W. M.

IN TESTIMONY that the above is a copy of the original remaining on file in the Department of Internal Affairs of Pennsylvania, made conformably to an Act of Assembly approved the 16th day of February, 1833, I have hereunto set my Hand and caused the Seal of said Department to be affixed at Harrisburg, this fourth day of December 1907.

Nancy Howell
Secretary of Internal Affairs.